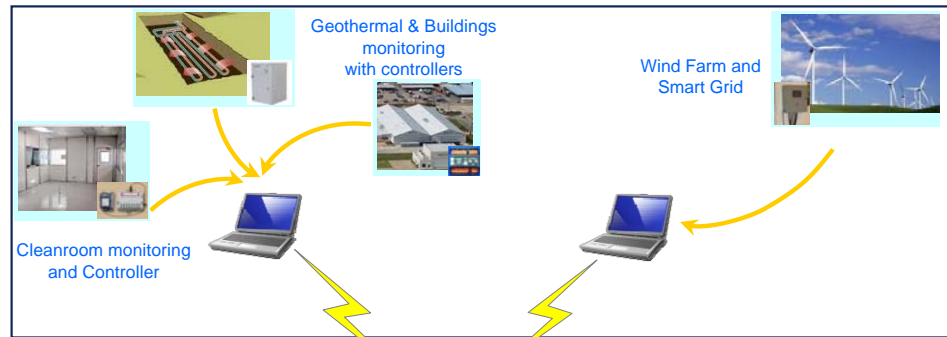


Now your eyes can see the vital parameters of your operation – live on your PC screen, plus on a spreadsheet & graphed report from wherever you are in the world.

Read & Send Data



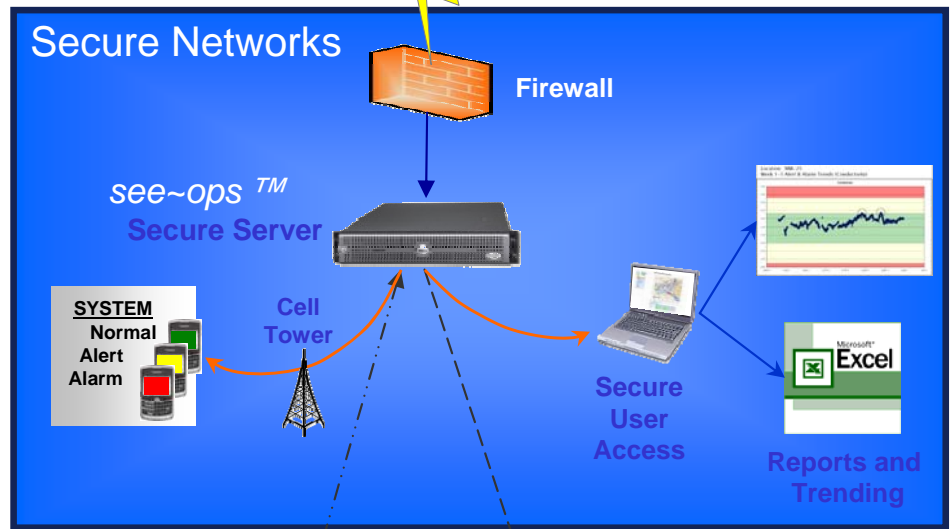
Why see~ops™ ?

- ✓ Proven Solution
- ✓ Simple to install
- ✓ Simple to maintain
- ✓ Easy to use

Key Features:

- ✓ Simplifies Reporting
- ✓ User Single Sign-On
- ✓ Password based user access
- ✓ Consolidates sensor data
- ✓ Identifies Alerts & Alarms
- ✓ Notifications– text/email
- ✓ Maps Data/Alerts/Alarms
- ✓ Exports data to MS Excel
- ✓ Publishes data (optional)

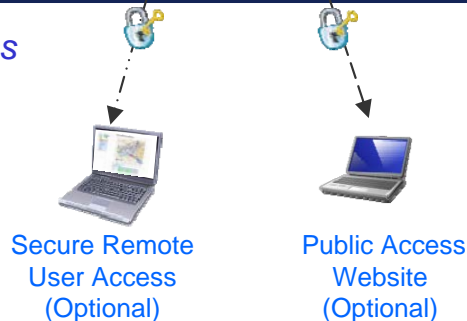
Secure Access



Industries Served?

- ✓ For equipment monitoring (clean rooms, heating & cooling)
- ✓ see~water™ for drinking water, surface water & distribution applications
- ✓ see~air™ for air quality & equipment monitoring and citizen reporting

Remote Access



For more information contact: A-Ware Solutions734-604-1289

see-ops.com

see~ops™ Server	
Server Specifications	
<ul style="list-style-type: none"> - Dual processor CPU - Dual hot-swappable hard drives - Dual hot-swappable power supplies - DVD-ROM internal drive, SATA - Dual 1-GB NIC - Minimum of 2xUSB2.0 ports - 56k modem (optional) - Standard monitor, keyboard and mouse (optional) - Rack rails or cable management arm (optional) 	
Infrastructure Requirements	Software Specifications
Setup	<ul style="list-style-type: none"> - see~ops™ Software - Windows Server 2008 OS license - Windows IIS - Registered domain name - Supplied AV software - Windows Remote Desktop active - Datalogger support software (optional) - MS Office Basic 2010 (Word, Excel, Outlook [optional])
<ul style="list-style-type: none"> - 1U rack slot - 110 V power, two outlets - 1-GB ethernet connectivity - Dedicated landline (optional) - Hardwired internet access - Fixed IP address - Firewall with intrusion detection support - Backup (daily incr., weekly comp., retain for 24 months) - Ghost copies of server - Ghost copy and backup media off-site storage - Specified client personnel (1) to support DASA LLC access 	<p>Limits**</p> <ul style="list-style-type: none"> - 10 parameters/location - 50 locations - 1 file/location received every 10 minutes
Server Environment	
<ul style="list-style-type: none"> - Temperature (16-32oC; 61-90oF) - Relative Humidity (20-80%) - Maximum Wet Bulb (23oC; 73oF) 	
Maintenance	
<ul style="list-style-type: none"> - Inbound data throughput not to exceed 10 MB per month with 100 mbps connections - Outbound data throughput not to exceed 25GB per month with 100 mbps connections - Provide OS (Windows 2008 Server- Standard) patches on a per need basis - Provide Sophos Antivirus (or equivalent) updates on a per need basis - Provide quarterly System maintenance (defragmentation, virus vault mgmt, cleanup of temp files, review of login log) - Provide monitoring support to ensure the server is up and running (24x7x365 basis) - Monitor scheduled backups to ensure they are complete and valid - Provide database mgmt (MS SQL Express) and archiving support on a quarterly basis - Specified client personnel (1) to support DASA LLC access 	
Warranty & Support	
<ul style="list-style-type: none"> - All required software licenses for this server will be provided by DASA LLC, with the exception of the Sophos AV (or equivalent) - AV Software not included with the server from DASA LLC must be approved by DASA LLC to maintain the active warranty - Hardware failure is covered by the Manufacture for parts (next day delivery) for 3 years. Labor to replace parts will be charged at agreed-upon rates - In the event of server/hard drives replacement, the time required to reinstall the ghost image and recover the backup will be charged at agreed-upon rates - Hardware replacement at the end of the 3 yr period is the responsibility of the client - Application support will be provided by DASA LLC on a T&M basis - Specified client personnel (1) to support DASA LLC access 	

* A-Ware Solutions retains the right to change specifications without written notice.
 **For operation outside of the stated limits, A-Ware Solutions provides engineered solutions.