



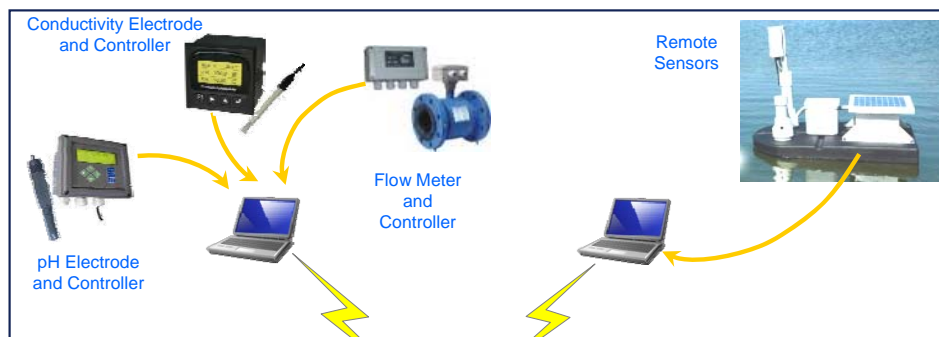
see water

See your data minute by minute



Now your eyes can *see* the vital parameters of your operation – live on your PC screen, plus on a spreadsheet & graphed report from wherever you are in the world.

Read & Send Data



Why see~water™ ?

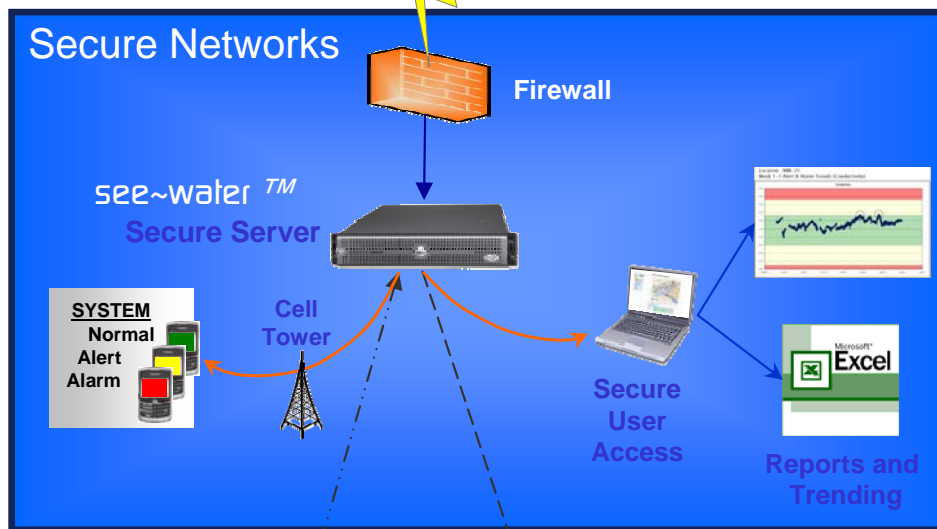
- ✓ Proven Solution
- ✓ Simple to install
- ✓ Simple to maintain
- ✓ Easy to use

Key Features:

- ✓ Simplifies Reporting
- ✓ User Single Sign-On
- ✓ Password based user access
- ✓ Consolidates sensor data
- ✓ Identifies Alerts & Alarms
- ✓ Notifications– text/email
- ✓ Maps Data/Alerts/Alarms
- ✓ Exports data to MS Excel
- ✓ Publishes data (optional)



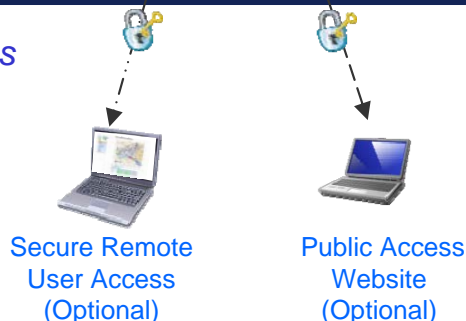
Secure Access



Industries Served?

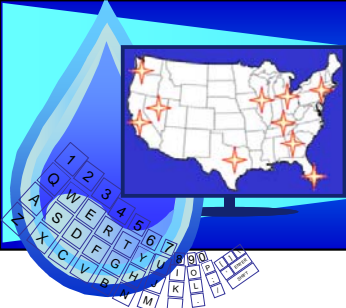
- ✓ Municipal drinking water, surface water & water distribution applications
- ✓ see~air™ for air quality monitoring and citizen reporting
- ✓ see~ops™ for equipment monitoring (clean rooms, heating & cooling)

Remote Access



For more information contact: A-Ware Solutions.....734-604-1289

see-water.com



see water



See your data minute by minute



info@a-wareolutions.com



see~water™ Server

Server Specifications

- Dual processor CPU
- Dual hot-swappable hard drives
- Dual hot-swappable power supplies
- DVD-ROM internal drive, SATA
- Dual 1-GB NIC
- Minimum of 2xUSB2.0 ports
- 56k modem (optional)
- Standard monitor, keyboard and mouse (optional)
- Rack rails or cable management arm (optional)

Infrastructure Requirements

Setup

- 1U rack slot
- 110 V power, two outlets
- 1-GB ethernet connectivity
- Dedicated landline (optional)
- Hardwired internet access
- Fixed IP address
- Firewall with intrusion detection support
- Backup (daily incr., weekly comp., retain for 24 months)
- Ghost copies of server
- Ghost copy and backup media off-site storage
- Specified client personnel (1) to support DASA LLC access

Server Environment

- Temperature (16-32oC; 61-90oF)
- Relative Humidity (20-80%)
- Maximum Wet Bulb (23oC; 73oF)

Maintenance

- Inbound data throughput not to exceed 10 MB per month with 100 mbps connections
- Outbound data throughput not to exceed 25GB per month with 100 mbps connections
- Provide OS (Windows 2008 Server- Standard) patches on a per need basis
- Provide Sophos Antivirus (or equivalent) updates on a per need basis
- Provide quarterly System maintenance (defragmentation, virus vault mgmt, cleanup of temp files, review of login log)
- Provide monitoring support to ensure the server is up and running (24x7x365 basis)
- Monitor scheduled backups to ensure they are complete and valid
- Provide database mgmt (MS SQL Express) and archiving support on a quarterly basis
- Specified client personnel (1) to support DASA LLC access

Warranty & Support

- All required software licenses for this server will be provided by DASA LLC, with the exception of the Sophos AV (or equivalent)
- AV Software not included with the server from DASA LLC must be approved by DASA LLC to maintain the active warranty
- Hardware failure is covered by the Manufacture for parts (next day delivery) for 3 years. Labor to replace parts will be charged at agreed-upon rates
- In the event of server/hard drives replacement, the time required to reinstall the ghost image and recover the backup will be charged at agreed-upon rates
- Hardware replacement at the end of the 3 yr period is the responsibility of the client
- Application support will be provided by DASA LLC on a T&M basis
- Specified client personnel (1) to support DASA LLC access

Software Specifications

- see~water™ Software
- Windows Server 2008 OS license
- Windows IIS
- Registered domain name
- Supplied AV software
- Windows Remote Desktop active
- Datalogger support software (optional)
- MS Office Basic 2010 (Word, Excel, Outlook [optional])

Limits**

- 10 parameters/location
- 50 locations
- 1 file/location received every 10 minutes

* A-Ware Solutions retains the right to change specifications without written notice.

**For operation outside of the stated limits, A-Ware Solutions provides engineered solutions.

For more information contact: A-Ware Solutions.....734-604-1289

see-water.com